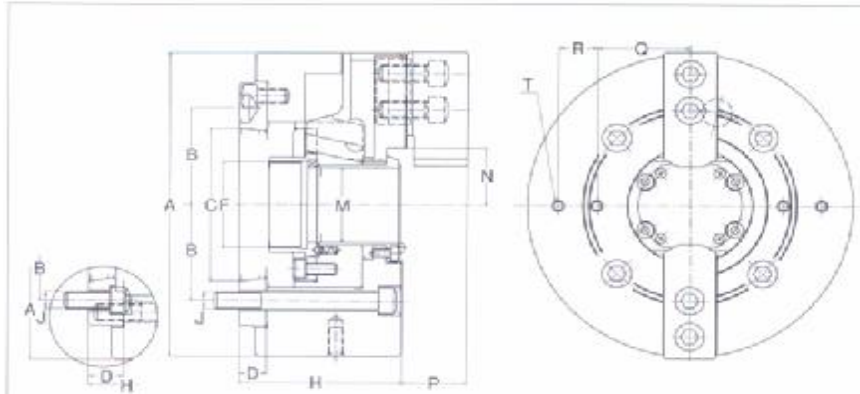




2-Jaw Power Chuck Wedge Type



This is a Wedge Style Power Chuck that will provide the workpiece tolerance you demand for your turning center.



1.5 x 60 Serrations
Large Thru-hole
Direct Mount
Hi-Speed

Type * Type A

Specification/Model	KCA5-6-46-2	KCA6-8-52-2	KCA6-10-75-2*	KC8-10-75-2	KCA8-12-85-2	KCA8-15-120B*	KCA11-15-120-2	KCA11-18-120-2
Thru-hole	1.81	2.04	2.95	2.95	3.34	4.72	4.72	4.72
Stroke of Jaws (on Dia.)	0.22	0.29	0.35	0.35	0.35	0.44	0.44	0.44
Stroke of Piston	0.51	0.66	0.78	0.78	0.78	0.98	0.98	0.98
Chucking Diameter								
Max	5.84	7.44	9.00	9.00	10.80	13.50	13.50	16.19
Min	0.47	0.82	1.04	1.04	1.96	2.95	2.95	3.66
Gripping Force lbs.	7,050	11,750	16,100	16,100	20,500	26,450	26,450	26,450
Max Draw Pull lbs.	3,300	4,025	6,400	6,400	7,500	10,300	10,300	10,300
Max RPM	6,000	5,000	4,000	4,000	3,200	2,500	2,500	2,000
Weight lbs	29	52	85	85	154	290	274	397

Size/Model	KCA5-6-46-2	KCA6-8-52-2	KCA6-10-75-2	KC8-10-75-2	KCA8-12-85-2	KCA8-15-120B	KCA11-15-120-2	KCA11-18-120-2
A	6.50	8.25	10.00	10.00	12.00	15.00	15.00	18.00
B	2.06	2.62	2.62	3.37	3.37	3.37	4.62	4.62
C	A5	A6	A6	A8	A8	A8	A11	A11
D	0.86	0.68	1.20	0.98	1.18	2.36	1.37	1.37
F	M55xP1.5	M60xP1.5	M85xP2.0	M85xP2.0	M93xP2.0	M130xP2.0	M130xP2.0	M130xP2.0
H	3.54	4.09	5.05	4.84	5.31	7.48	6.49	6.49
J	4-M10	4-M12	6-M16	8-M16	6-M16	6-M20	8-M20	8-M20
M	1.81	2.04	2.95	2.95	3.34	4.72	4.72	4.72
N								
Max	1.27	1.55	2.04	2.04	2.36	3.12	3.12	3.12
Min	1.16	1.40	1.87	1.87	2.18	2.90	2.90	2.90
P	1.25	1.65	1.73	1.73	2.12	2.55	2.55	2.55
Q	1.77	2.36	3.14	3.14	3.34	3.93	3.93	4.72
R	0.98	0.98	1.18	1.18	1.77	2.36	2.36	2.95
T	4-M8deep12	4-M8deep15	4-M12deep18	4-M12deep18	6-M16deep20	4-M16deep25	4-M16deep25	4-M16deep25