



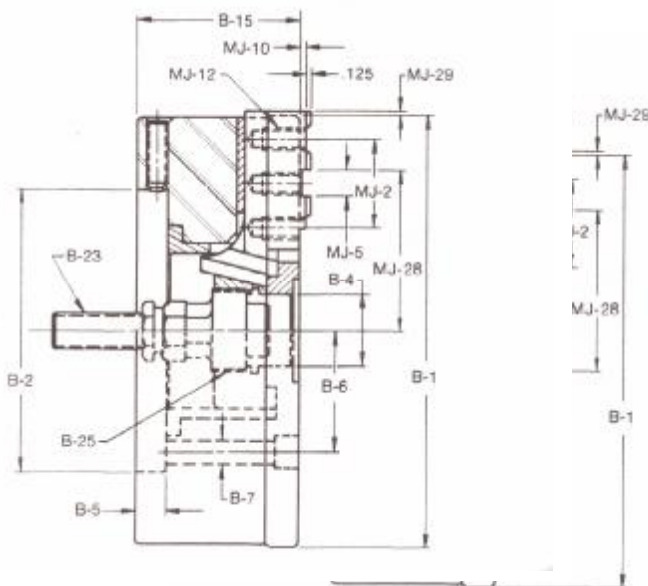
2/3 Jaw Combination Power Chuck

MADE IN USA



- Wedge Style Power Chuck
- Steel Body
- Available with or without thru-hole
- Grips both Round & Square Workpieces
- Manufactured in USA
- 10" to 24" diameters
- 0.001 TIR repeatability is guaranteed on duplicate parts
- Superior grip at speeds from 900 – 2600 RPM's
- Mounting Plate required
- Available with Tongue & Groove, Square Serrated, 1/16 x 90 degree and 1.5 x 60 degree

Chuck Size	Order #	Spindle Weight	2-Jaw Draw Bar Force	3-Jaw Draw Bar Force
10	2310	92	8,000	9,000
12	2312	133	7,000	10,500
15	2315	218	10,000	15,000
18	2318	331	10,000	15,000
21	2321	570	10,000	15,000
24	2324	748	10,000	15,000



Chuck Size	B-1	B-2	B-4	B-5	B-6	B-7	B-15	MJ-2	Cross Slots	MJ-5	MJ10	MJ-12	MJ-28 Open	MJ-28 Closed	MJ-29	Jaw Travel
10	10.00	7.905	2.000	.875	3.375	.688	4.469	2.125	1	.750	.186	5/8-11	3.813	3.438	.063	0.375
12	12.00	7.905	2.000	.875	3.375	.688	4.469	2.500	1	.750	.186	5/8-11	4.500	4.125	.125	0.375
15	15.00	11.779	3.187	.938	4.625	.781	5.156	3.000	1	.750	.281	3/4-10	5.625	5.250	.125	0.375
18	18.00	11.779	3.187	.938	4.625	.781	5.156	3.000	2	.750	.281	3/4-10	5.625	5.250	.125	0.375
21	21.00	16.031	3.750	1.188	6.500	.938	6.500	3.000	2	.750	.313	3/4-10	7.125	6.625	.125	0.500
24	24.00	16.031	3.750	1.188	6.500	.938	6.500	3.000	3	.750	.313	3/4-10	7.125	6.625	.125	0.500

Chuck Size	Max Thru-Hole (in)	Max RPM	Wedge Travel (in)	Jaw Travel (in.)	Max Drawbar Pull (lbs) 3-Jaw	Max Drawbar Pull (lbs) 2-Jaw
10	1.75	2,600	1.50	.375	9,000	6,000
12	1.75	2,200	1.50	.375	10,500	7,000
15	3.00	1,500	1.50	.375	15,000	10,000
18	3.00	1,200	1.50	.375	15,000	10,000
21	3.50	1,000	2.00	.500	15,000	10,000
24	3.50	900	2.00	.500	15,000	10,000

*Estimated ship weight includes mounting adapter.