



MADE IN USA

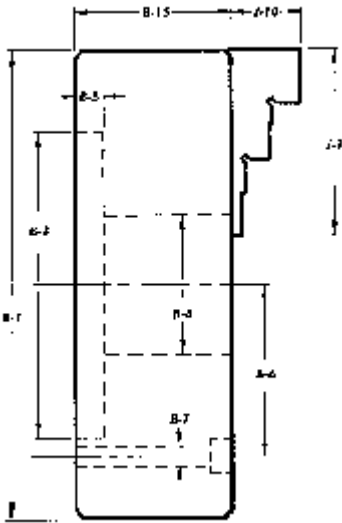
KCM MICRO SET CHUCKS



THREE JAW SCROLL CHUCK WITH SOLID INSIDE & OUTSIDE JAWS

.0005" TIR REPEATABILITY DUPLICATED PARTS THROUGH 12" CHUCKS

Semi-steel body. Scroll and jaws hardened and ground for increased life and gripping force.



| Size | Model | OD Min | OD Max | ID Min | ID Max | Max RPM |
|------|-------|--------|--------|--------|--------|---------|
| 4" | 3434 | 1.181 | 3.543 | 0.079 | 1.181 | |
| 5" | 3533 | 1.575 | 5.118 | 1.118 | 1.575 | |
| 6" | 3634 | 1.984 | 5.375 | 0.125 | 1.843 | 3400 |
| 8" | 4833 | 2.140 | 9.000 | 0.187 | 2.718 | 3100 |
| 10" | 5103 | 3.375 | 10.000 | 0.437 | 4.812 | 2700 |
| 12" | 5123 | 4.250 | 12.400 | 0.750 | 5.375 | 2200 |

| | 4" | 5" | 6" | 8" | 10" | 12" |
|------|-------|-------|-------|-------|-------|-------|
| B-3 | 2.125 | 2.375 | 3.125 | 4.750 | 6.375 | 7.906 |
| B-4 | .0866 | 1.181 | 1.520 | 2.257 | 2.810 | 3.257 |
| B-5 | 0.656 | 0.656 | 0.687 | 0.750 | 0.800 | 0.875 |
| B-6 | 1.656 | 2.291 | 2.672 | 3.750 | 2.187 | 2.625 |
| B-7 | 0.219 | 0.281 | 0.281 | 0.406 | 0.469 | 0.531 |
| B-15 | 2.900 | 4.500 | 2.350 | 3.125 | 3.500 | 4.000 |
| J-1 | 1.500 | 2.125 | 2.500 | 3.500 | 3.625 | 4.250 |
| J-10 | .800 | 1.000 | 0.953 | 1.344 | 1.750 | 1.700 |

SIX JAW SCROLL CHUCK WITH SOLID INSIDE & OUTSIDE JAWS

| Size | Model | OD Min | OD Max | ID Min | ID Max | Max RPM |
|------|-------|--------|--------|--------|--------|---------|
| 6" | 3665 | 1.984 | 5.375 | 0.125 | 1.843 | 2500 |
| 8" | 4865 | 2.187 | 7.750 | 0.187 | 2.718 | 2200 |
| 10" | 5106 | 3.375 | 10.000 | 0.437 | 4.812 | 1900 |
| 12" | 5127 | 4.250 | 11.250 | 0.750 | 5.375 | 1300 |

Supplied With:

Chuck, 1 Set of Inside and
1 Set of Outside Solid Jaws, and
Chuck Wrench

| | 6" | 8 1/4" | 10" | 12" |
|------|-------|--------|-------|-------|
| C-1 | 6.000 | 8.250 | 10.00 | 12.00 |
| C-3 | 3.125 | 4.750 | 6.375 | 7.906 |
| C-4 | 1.520 | 2.257 | 2.810 | 3.257 |
| C-5 | 0.687 | 0.750 | 0.800 | 0.875 |
| C-6 | 2.672 | 3.750 | 2.187 | 2.625 |
| C-7 | 0.281 | 0.406 | 0.469 | 0.531 |
| C-15 | 2.350 | 3.125 | 3.500 | 4.000 |
| J-1 | 2.500 | 3.500 | 3.625 | 4.250 |
| J-10 | 0.953 | 1.344 | 1.750 | 1.700 |

**.0005" TIR
REPEATABILITY
DUPLICATED PARTS
THROUGH 12" CHUCKS**