



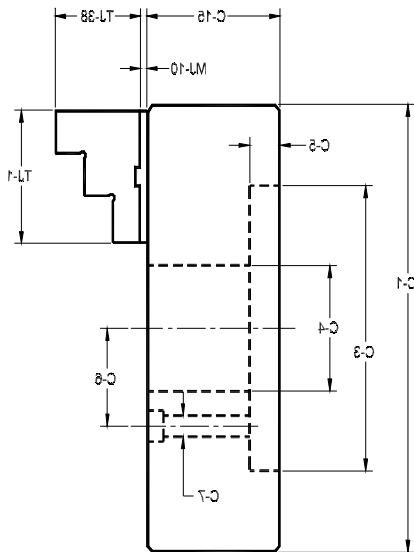
MICRO SET SCROLL CHUCKS



2-JAW MICRO SET SCROLL CHUCKS

Designed for handling "T's", Elbows, and other odd shaped parts. Master Jaw series only. Style #7 Soft top jaws required for workholding.

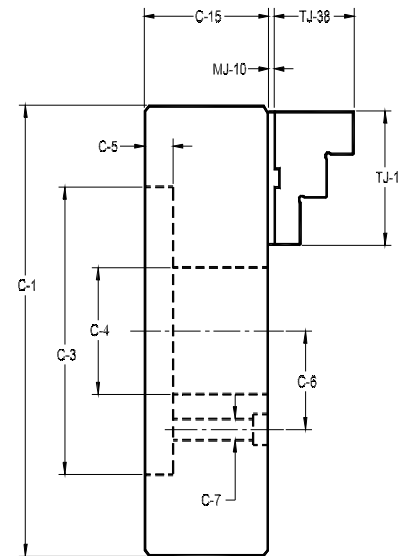
| Chuck Dia. | Chuck No. | Master Jaw Width | Av. Spindle Weight with Mounting plate |
|------------|-----------|------------------|--|
| 6.00 | 3623 | 0.738 | 24 |
| 8.25 | 4822 | 0.950 | 57 |
| 10.00 | 2102 | 1.234 | 81 |
| 12.00 | 2122 | 1.484 | 125 |



Principal Dimensions

| | 6" | 8 1/4" | 10" | 12" |
|-------|-------|--------|--------|--------|
| C-1 | 6.000 | 8.250 | 10.000 | 12.000 |
| C-3 | 3.125 | 4.750 | 6.375 | 7.906 |
| C-4 | 1.520 | 2.257 | 2.810 | 3.257 |
| C-5 | 0.688 | 0.750 | 0.800 | 0.875 |
| C-6 | 2.671 | 3.750 | 2.188 | 2.625 |
| C-7 | 0.281 | 0.406 | 0.469 | 0.531 |
| C-15 | 2.650 | 3.125 | 3.500 | 4.000 |
| MJ-10 | 0.100 | 0.175 | 0.165 | 0.165 |
| TJ-1 | 2.531 | 3.562 | 3.750 | 4.375 |
| TJ-38 | 1.403 | 1.875 | 2.375 | 2.375 |

4-JAW MICRO SET SCROLL CHUCKS



| Chuck Dia. | Chuck No. | Master Jaw Width | Av. Spindle Weight with Mounting Plate |
|------------|-----------|------------------|--|
| 6.00 | 1064R | 0.738 | 26 |
| 8.25 | 1084R | 0.950 | 61 |
| 10.00 | 1104R | 1.234 | 87 |
| 12.00 | 1125R | 1.484 | 131 |

Principal Dimensions

| | 6" | 8 1/4" | 10" | 12" |
|-------|-------|--------|--------|--------|
| C-1 | 6.000 | 8.250 | 10.000 | 12.000 |
| C-3 | 3.125 | 4.750 | 6.375 | 7.906 |
| C-4 | 1.520 | 2.257 | 2.810 | 3.257 |
| C-5 | 0.688 | 0.750 | 0.800 | 0.875 |
| C-6 | 2.671 | 3.750 | 2.188 | 2.625 |
| C-7 | 0.281 | 0.406 | 0.469 | 0.531 |
| C-15 | 2.350 | 3.125 | 3.500 | 4.000 |
| MJ-10 | 0.100 | 0.175 | 0.165 | 0.165 |
| TJ-1 | 2.531 | 3.562 | 3.750 | 4.375 |
| TJ-38 | 1.406 | 1.875 | 2.375 | 2.375 |

Local: 269-679-2325 Toll Free: 888-727-4703

Fax: 269-679-5210 or Email: kzoochuck@aol.com